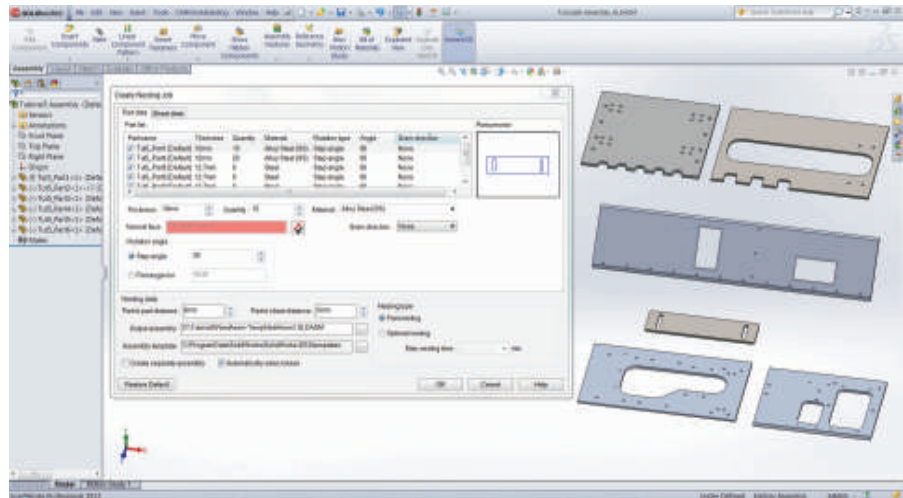


# No. 1 Nesting Solution for SOLIDWORKS

## Highlights

- **Seamless Integration** within SolidWorks makes it easier to generate layouts without leaving the SOLIDWORKS interface.
- **Full Associativity**
- **Automatically nest** SOLIDWORKS Parts and Assemblies.
- **Powered by NestLib**<sup>®</sup> the nesting engine from Geometric with over a decade of industry expertise and an advanced set of nesting algorithms to suit different requirements.
- **Reduction in Material Waste**
- **Improved utilization and increase in productivity**

NESTINGWorks is a nesting module designed to nest the layouts of SOLIDWORKS parts or assemblies. It is integrated with SOLIDWORKS and allows the user to seamlessly transition 3D SOLIDWORKS models as well as sheet metal parts or assemblies to CAM nested SOLIDWORKS 3D assembly files. NESTINGWorks uses NestLib<sup>®</sup>, one of the fastest and most featured automatic true-shape nesting libraries available in the industry.



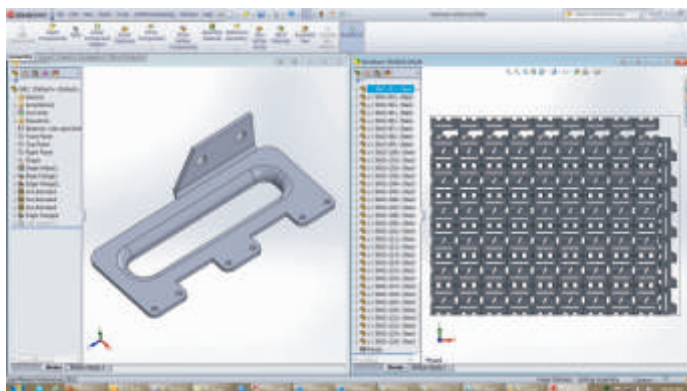
NESTINGWorks User Interface

## NESTINGWorks Features

- **Easy to Learn and Use Solution**
- **Fully Automatic True- shape Nesting**
- **Optional advanced modules for highly specialized requirements**
- **Fast Nesting and Optimal Nesting (with time constraint) options**

This module can be used for nesting composites, wood and metals and can produce the maximum number of parts from a single piece of raw material within a few minutes.

NESTINGWorks is the new, automatic nesting module that is seamlessly integrated within SOLIDWORKS.



Sheet Metal Nesting

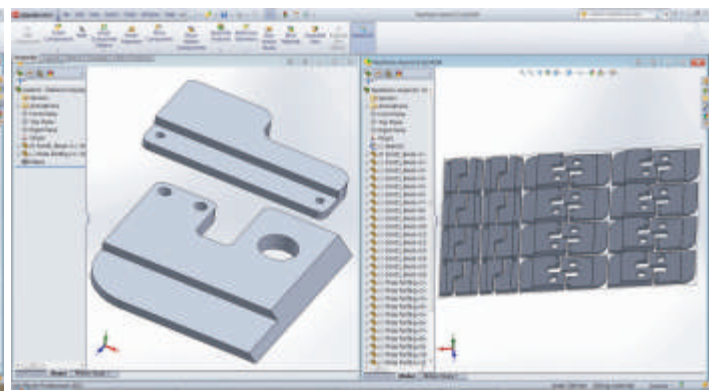
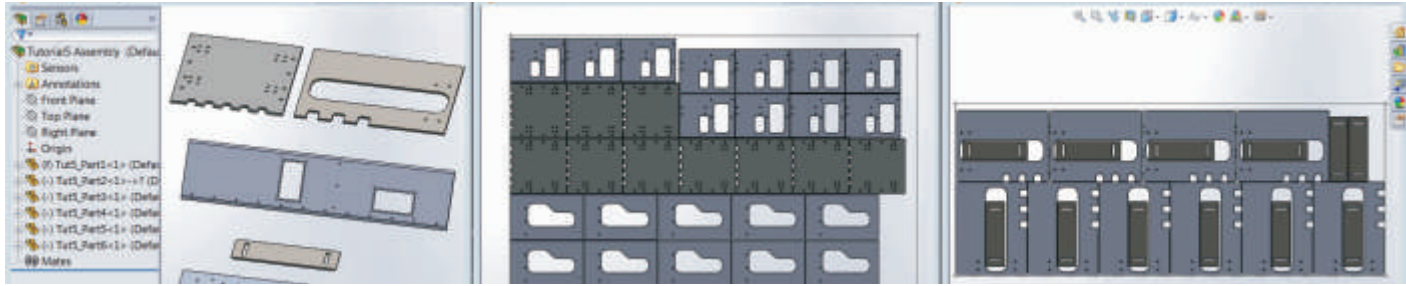


Plate Nesting



Assembly Nesting

Key Features	Benefits
<b>Ease of Use</b>	3D Sheet metal or Solid models or assemblies are directly imported as an input, without converting them into flat patterns or DXFs. The familiar SOLIDWORKS interface makes it easy-to-use.
<b>Full Associativity with SOLIDWORKS</b>	Updates are tracked and flagged whenever the component is changed. Just refresh the nest to reflect the updated designs.
<b>SOLIDWORKS Compatible Output</b>	Provides the nesting output as a new SOLIDWORKS assembly and retains the original part and assembly. The SOLIDWORKS nested assembly can then be used for further processing, such as tool-path and NC Code generation with CAMWorks or any other CAM software, if required.
<b>Part Requirements automatically assigned</b>	Automatically nests multiple parts, based on material and thickness, within an assembly in a single run. This feature helps users eliminate manual efforts in segregating individual parts with the same material and thickness for a nesting operation.
<b>Material Optimization</b>	The advanced true-shape automatic nesting algorithms reduce raw material consumption by providing optimized and compact layouts.

### Other CAMWorks Modules available:

In addition to NESTINGWorks, CAMWorks provides a variety of other modules:

- 2½ Axis, 3 Axis, 3 Axis with Undercut
- 4 Axis and 5 Axis Simultaneous Milling
- 2 and 4 Axis Turning
- Rotary Milling
- 2 and 4 Axis Wire EDM
- ElectrodeWorksTM
- VoluMillTM

**Includes:** SolidProfessor Multimedia Training Course - SOLIDWORKS Core Concepts & CAMWorks Mill, Turning & Wire EDM

**Add-ons:** Machine Simulator, CAMWorks Utilities

Fundamentals

**CAMWorks Solids** integrated solid modeler can be packaged with CAMWorks. This allows CAMWorks to function as a standalone product without the need to purchase an additional solid modeler.

#### CAMWorks

To know more about this solution:

**Email:** [camworks@solidexpert.com](mailto:camworks@solidexpert.com)

**Website:** <http://solidexpert.com/program/camworks/>

**Phone:** 12 626 06 00

#### About Geometric

Geometric is a specialist in the domain of engineering solutions, services and technologies. Geometric's Geometry Technology Solutions (GTS) business unit develops cutting-edge point productivity solutions that enhance design and improve manufacturing operations. The end-user products from Geometric include CAMWorks®, eDrawings® Publisher, DFMPro, GeomCaliper®, 3DPaintBrush™, CAMWorksXpress® and Glovius®. The key technologies from Geometric are NestLib®, Feature Recognition (FR), GeomDiff and 3DSearchIT®. Geometric licenses these technologies to OEM partners and also designs and implements customized process solutions using these technologies for industrial customers.

For further details about Geometric's GTS business unit, please visit [www.geometricglobal.com/products](http://www.geometricglobal.com/products)

*The copyrights/trademarks of all products referenced herein, are held by their respective companies.*